

Further Unravelling Psychosocial Disability: The Lived Experience of the NDIS from the First Year at the NSW Hunter Launch Site

29 August presentation to 2014 TheMHS Conference, Perth WA
Tina Smith – Senior Policy Advisor/Sector Development, MHCC
(NDIS Mental Health Analyst in partnership with the NSW Mental Health Commission)



Mental Health Commission
of New South Wales



NSW Hunter NDIS Trial Site Activity



- 10K people in Newcastle, Lake Macquarie and Maitland LGAs (1,300 with high levels of psychosocial disability?)
 - 2013/14: 3K people Newcastle LGA
 - 2014/15: 5K people Lake Macquarie LGA
 - 2015/16: 2K people Maitland LGA
- Trial commenced 1 July 2013 and there have been high levels of mental health (MH)/psychosocial disability (PSD) activity

NSW Perspective on NDIS

Today's presentation will address:

- Activities undertaken through the MHCC NDIS 'MH analysis' partnership with the NSW MH Commission
- Hunter NDIS & MH 'Community of Practice' (COP) Forum
- Consumer & carer representation and participation in NDIS implementation & evaluation
- Establishment of NDIA/HNEMHS MH Subject Matter Reference Group
- Engagement with MHCA NDIS Capacity Building Project

How many people with PSD?

At the March Hunter NDIS & MH 'Community of Practice' (COP) Forum:

- NDIA reported 89 clients with 'primary' PSD and 75 had plans.
- HNEMHS reported 63 referrals of people to NDIA from hospitals (19 people accepted) and community team caseloads being audited.

At the end of March, 531 people with PSD had accessed the NDIS nationally 298 primary PSD and 93 plans

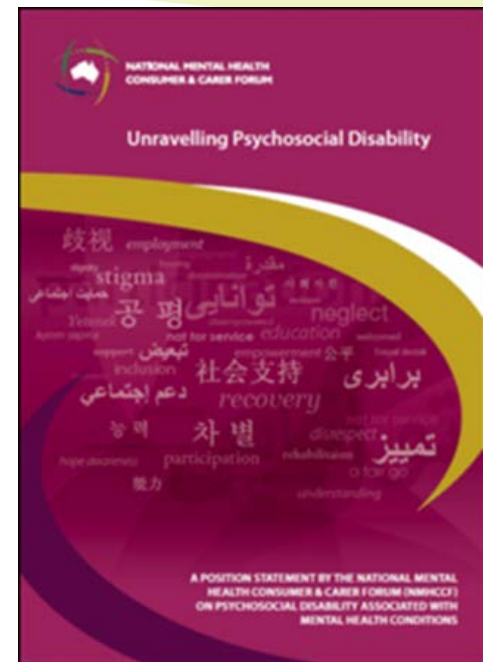
This is less than 1% of the target of 57K people with PSD intended to access NDIS support by the end of the 3 year trial

MHCC Partnership with the NSW MH Commission

Year 1 partnership objectives are to better understand ...

- 1. How will PSD be understood and included under the NDIS?**
- 2. The wider NDIS and health services interface (eg, physical health, substance use)**
- 3. People with co-existing difficulties (eg, intellectual, physical, sensory and other disability)**
- 4. The suitability of the assessment tool/s**
- 5. Contribute to the national discourse regarding the situating of psychosocial disability within the NDIS**

... what is the NDIS and how it will affect people living with mental health concerns?



Further unravelling psychosocial disability!

Five objectives supported by 13 additional interdependent activities

Learning

- Learning from consumers, carers and service providers in the launch site
- Liaison with the NDIA, HNELHD/MH , NSW FaCS/ADHC, NDS, etc.
- Reconciling 'permanent disability' with the philosophy and practice of psychosocial disability and & recovery support service delivery

Watching

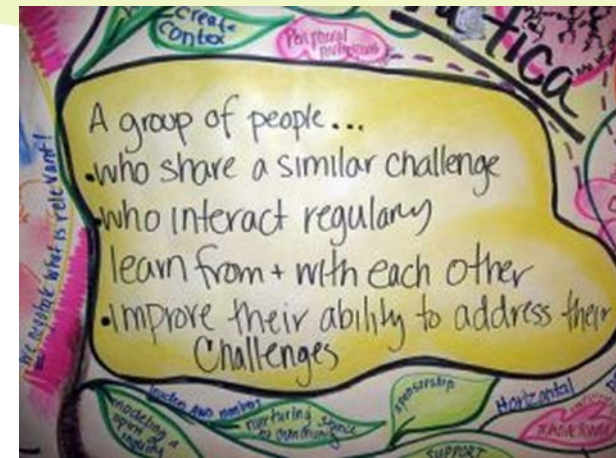
- Tracking 'transitions', 'phasings' & 'new' referrals of people to the NDIA (PHaMS)
- Interface between NDIA and the new Partners in Recovery program
- Understanding 'in-scope' and 'out-of-scope' community sector programs
- What the NDIS means for people that are not Tier 3 eligible

Influencing

**... establishment of the
Hunter NDIS and MH 'Community of Practice'**

Hunter NDIS & MH 'COP' Forum

- Hosted by MHCC & the NSW Mental Health Commission
- Meetings held:
 - 15 October 2013
 - 23 January 2014
 - 20 March 2014
 - 17 June 2014
- Sharing and reflecting on experiences of the first year
- Updates from HNEMHS, NDIA & MHCA



Who belongs to the COP?

224 people at the end of Year 1 NDIS:

- 102 community sector workers from the Hunter
- 52 community sector workers from outside the Hunter
- 54 other people from the Hunter
- 13 other people from outside the Hunter
- 3 consumers



Josh Fear/MHCA, Suzanne Punshon/NDIA, Tina Smith/MHCC and Sage Telford/NSW Mental Health Commission at the Hunter NDIS and Mental Health 'Community of Practice' Forum.

Consumer & carer representation and participation in the NDIS/NDIA

- **Concerns identified at 23/1 COP Forum**
 - Organised a meeting with consumers and carers at RichmondPRA
- **Addressed at 20/3 COP Forum**
 - Q&A Panel with a consumer, carer & service provider representative
- **Addressed at 17/6 COP Forum**
 - Presentations by NSW CAG & ARAFMI
- **Next COP Forum**
 - The next forum will highlight consumers and carers experiences/stories and include a presentation by the NSW Ombudsman

**Attitudes
are the Real
Disability**

NDIA/HNEMHS MH Subject Matter Reference Group (SMEG)

2013

- Fortnightly NDIA/HNELHD NDIS implementation meeting
- 17 October FACS/NSW Health Pathways meeting

2014

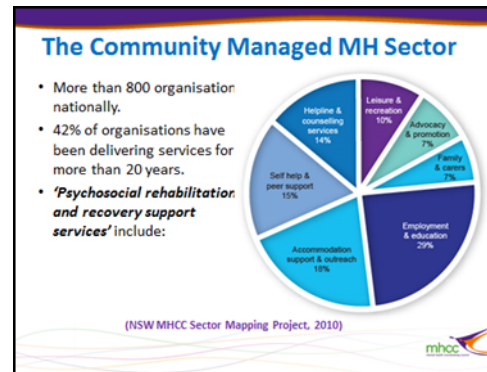
- Maturation of operational and governance structures
- NDIS Operational Working Group
 - Physical health SMEG
 - Child and adolescent SMEG
 - MH SMEG (MHCC invited every 2nd month)



Consumer & carer representation?

Contributing to the National Discourse

- Ongoing collaboration with a range of national stakeholders
 - MHA
 - CMHA
 - DSS & NDIA
 - Organisations



- MHCC MOU with the National Disability Service (NDS)
- NSW contribution to the MHA Capacity Building Project

NSW Engagement with MHCA NDIS Capacity Building Project

Project Advisory Group Tina Smith/MHCC

Working Groups

Scheme design and administrative arrangements

Tully Rosen/MHCC, Mark Cliff/Richmond PRA – Hunter and Sally Regan/PIR (Hunter Medicare Local)

Assessment and eligibility

Rob Ramjan/SFNSW and Nicola O'Brien/Neami National

Monitoring, evaluation and service quality

Tully Rosen/MHCC and Janelle Heatley/Aftercare

Supported decision making and diverse groups

Kieran Condell/SFNSW

Organisational readiness and workforce

Tina Smith/MHCC (Chair)

Lessons Learned

- It's about both people with PSD accessing the NDIS and the numbers of them accessing.
- It's about people with complex health and social needs and consumer & carer representation is critical to getting it right!
- We need to better understand health & disability role delineations as currently articulated in the NDIS 'in-principle' agreements (and include local level variations).
- Assessment and care planning tools and processes need to be consistent with what is known to be good practice in recovery oriented and trauma informed service delivery
- Our learning is going to be continuing for a long time and so how do we best maximise this?

Thank you for your participation!

[To contact Tina Smith: tina@mhcc.org.au](mailto:tina@mhcc.org.au)

[Or for additional information about Hunter trial site activity as this relates to mental health:](#)

<http://www.mhcc.org.au/policy-advocacy-reform/influence-and-reform/ndis-and-mental-healthpsychosocial-disability.aspx>

... or  : MHCC NDIS