

Psychosocial Rehabilitation Services for Immigration Department Detainees



Presenter: Shane Jakupec
Neami Central Sydney Service Manager

CONTENTS

Neami

Lead up to working with target group

Case Study

Learning's



NEAMI ORGANISATION

NEAMI

A national specialist psycho-social rehabilitation service with a strong belief in consumers recovery process.

Originated in Victoria 21 years ago

Across five states



NEAMI ORGANISATION

MISSION

Improving mental health and wellbeing
in local communities

NSW PROGRAMS

HASI

Resource & Recovery

PHAMS



NEAMI ORGANISATION

PSYCHO-SOCIAL REHABILITATION

Core concepts relating to the topic:

Self Determination – So much choice is taken away...need to feel a sense of choice in their future

Holders of Hope – instill hope

Connectedness – to the community and others in a positive way

BACKGROUND

WHY WORK WITH IMMIGRATION DETAINEES?

Contacted by Immigration Department
Request to provide PSR for detainees in
Villawood Detention Centre

NEAMI BOD & staff considered request
Discussed moral issues

Agreed to provide PSR – in line with Neami principles

CHANGE IN LEGISLATION

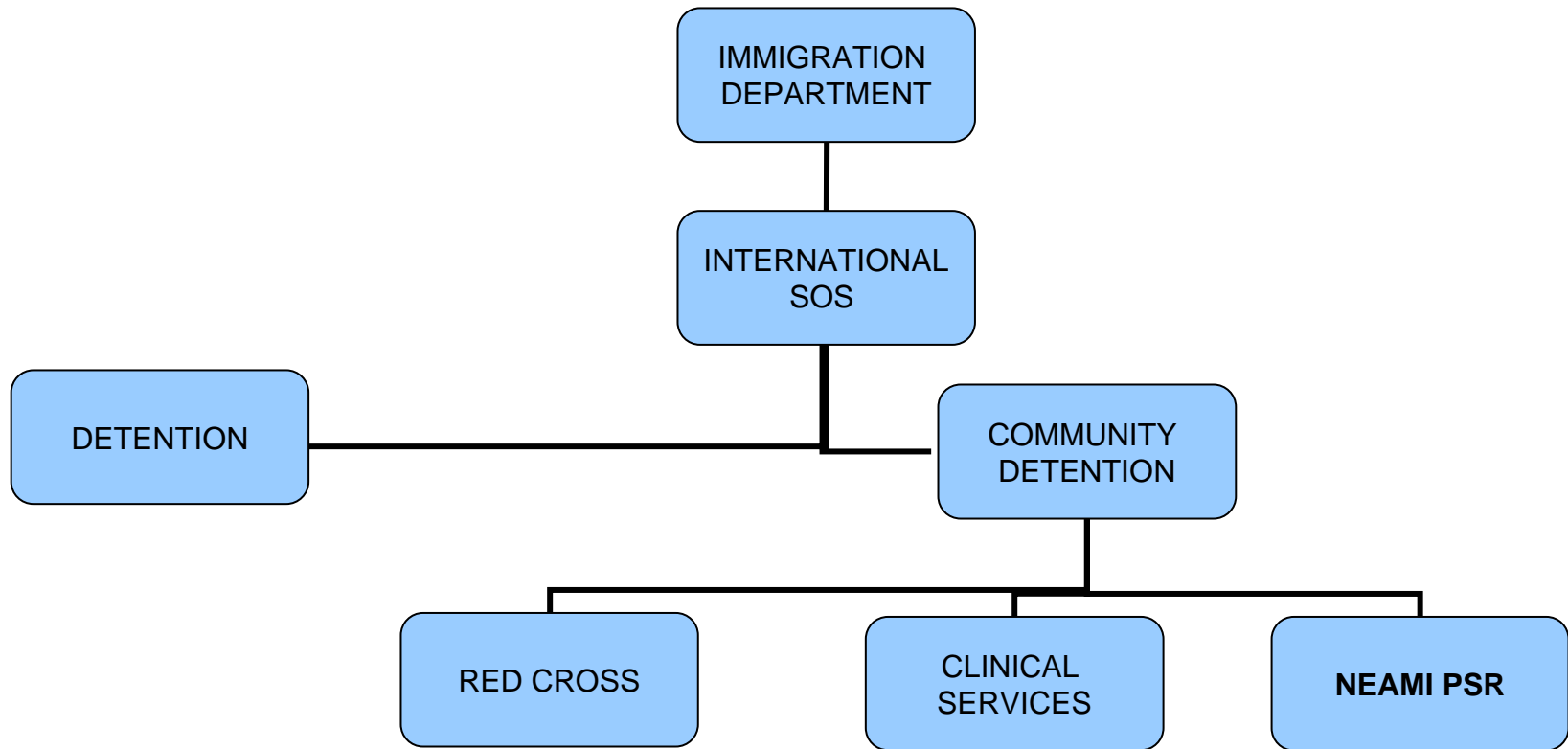
CHANGE IN GOVERNMENT

Change in legislation 29 July 2008 by Senator Chris Evans (Minister for Immigration & Citizenship)

People can await a decision on their visa in community detention unless they pose a danger to the community.

More in line with Neami mission – improving mental health and wellbeing in local communities

MODEL OF SUPPORT



CASE STUDY - BACKGROUND

- Conducted an Initial assessment
- Young, Chinese born male
- Pre-existing Depression
- In detention due to breach father made with visa

CASE STUDY - BACKGROUND

- Living with father, stepmother and two half sisters in community detention
- Had regular contact with biological mother by phone
- Was isolating himself/not participating in daily life
- Lost hope

CASE STUDY - ENGAGEMENT

- Two hour visits twice weekly for 3 months
- Mandarin speaker on staff proved valuable
- Discussed his background and interests
- Discussed a plan for the future irrespective of living environment post decision regarding a visa
- Explored existing resources available now while visa outcome pending.

CASE STUDY - GOALS

- Community access – familiarisation with the city
- Vocation exploration – future focus
- Developing social skills – exposure to groups and different environments
- Travel training skills
- Confidence building
- Advocacy – support with accessing native speaking, culturally relevant psychiatrist

CASE STUDY - VISA OUTCOME

- Positive outcome
- Granted a Visa with the family.

CASE STUDY - ISSUES

- Became unwell
- Not able to access psychiatric hospital for admission – repeatedly turned back in NSW.
- International SOS required to send him to Brisbane for admission (Toowong) - continued support via phone
- Once VISA was granted there was very short time frame for ending support.

LEARNINGS

- PSR is an effective approach when working with people in community detention
- Advocating for a longer time frame to discontinue services following a positive VISA outcome is necessary to facilitate appropriate community linkages
- If a client suffers from torture and trauma, need specialist assistance and advice (STARTS)

LEARNINGS

- Hope can be instilled in a semi restrictive environment with an unclear future
- Discharge planning to begin at entry – short time frame
- Looking towards the future knowing that a decision will be made either way, allows you to explore your future irrespective of the outcome.